

**DEPARTMENT OF PUBLIC WORKS
BUREAU OF STREET LIGHTING**

DATE NOV 17 2021

C.D. 5

Honorable City Council
of the City of Los Angeles

**WESTHOLME AVENUE & MISSOURI AVENUE
STREET LIGHTING MAINTENANCE ASSESSMENT DISTRICT**

This report submits the proposed Ordinance of Intention to institute maintenance assessment proceedings for the above street lighting project.

RECOMMENDATIONS

1. Council adopt this report and the Ordinance of Intention, and that the proceedings be conducted in accordance with Sections 6.95 - 6.127 of the Los Angeles Administrative Code, Section 53753 of the California Government Code, and Proposition 218 (Articles XIII C and XIII D of the California Constitution). This includes Council holding a Public Hearing for the proposed District Diagram with City page numbers 15589.
2. Upon Council adoption of the Ordinance of Intention, the Bureau of Street Lighting be instructed to: Mail notices of the assessment ballot proceedings, and Mail assessment ballots (as required by Prop. 218) to the property owners in the lighting district.
3. Upon completion of Item 2 above, the City Clerk be instructed to conduct the assessment ballot proceedings (i.e. count, certify, and report the results of the assessment ballot proceedings to the Council).
4. Following the conclusion of the final public hearing, if a project has weighted "YES" votes equal to, or in excess of weighted "NO" votes, the Council shall deny the appeals, confirm the maintenance assessments, and adopt the Final Ordinance levying the assessments. If the weighted "NO" votes are in excess of weighted "YES" votes, Council will abandon the lighting district and proceedings in accordance with Proposition 218; and the affected street lighting system shall be removed from service or not be constructed.
5. A copy of this report be provided to each affected Council office and the Mayor's Office of Economic Development.

The passage of Proposition 218 on November 5, 1996, requires a vote of the property owners prior to Council confirming and levying the assessments for maintenance. Upon adoption of the transmitted Ordinance of Intention, the Council shall set a date for hearing appeals and the last day to receive completed assessment ballots. A hearing to be held by the Board of Public Works will be scheduled at least one week prior to the date of the public hearing for the City Council to review and resolve any appeals concerning the proposed maintenance assessments – as specified in the Engineer's Report. If the assessment ballot proceeding as required by Proposition 218 approves these assessments, the City Council may confirm and levy the assessments. If levied, the administration of this district may be combined with that of another district or districts in the future as provided in the Ordinance of Intention. Protests that are received, as described in the Administrative Code, are for the consideration of the Council, but are not binding. Only a weighted majority vote against the assessment is binding.

The assessments to be levied to pay for the cost and expenses of the work or improvements in the proposed WESTHOLME AVENUE & MISSOURI AVENUE Street Lighting Maintenance Assessment District (or Sidewalk Maintenance Assessment District) fall within the (e)7 exemption of Prop 26. As set forth in the accompanying Ordinance of Intention, said assessments will be imposed in accordance with the provisions of Article XIID of the California Constitution.

In accordance with Council Policy adopted on December 11, 1998, the Bureau of Street Lighting will cast ballots in favor of the assessments for all Council controlled public properties in the district.

SUMMARY

TOTAL STREETLIGHTS:	1
AFFECTED PARCELS:	43
TOTAL ASSESSMENTS:	\$ 1,022.44
TAX YEAR:	2021/2022
TYPE OF PROJECT:	PROPOSED PRIVATE DEVELOPMENT PROJECT

TRANSMITTALS

1. Ordinance of Intention, approved as to form and legality by the City Attorney, for the proposed assessment district.
2. Engineer's Report as required by Proposition 218.
3. Proposed assessment roll.
4. Diagram delineating those lands proposed to be assessed.

Report prepared by:
Assessment Engineering Division
Proposition 218 Compliance Section
L. Dam, Street Lighting Engineering Associate II
Ruben Flamenco, P.E., Division Manager

Respectfully submitted,


Miguel Sangalang, Executive Director
Bureau of Street Lighting

ORDINANCE NO. _____

An Ordinance of Intention to order the necessary street lighting systems to be operated, maintained, and repaired, including furnishing electric energy, for the Fiscal Year of 2021-2022, for the lighting of that district designated as the **WESTHOLME AVE. & MISSOURI AVE. LIGHTING DISTRICT** pursuant to the provisions of Sections 6.95 - 6.127 of the Los Angeles Administrative Code, Section 53753 of the California Government Code, and Proposition 218 (Articles XIII C and XIII D of the California Constitution).

**THE PEOPLE OF THE CITY OF LOS ANGELES
DO ORDAIN AS FOLLOWS:**

Section 1. The public interest and convenience require, and it is the intention of the Council of the City of Los Angeles to order the following improvement to be made:

That the necessary street lighting equipment be operated, maintained and repaired and that electric energy be furnished for the Fiscal Year of 2021-2022, for the lighting of:

WESTHOLME AVENUE,

From 233' to 383' west of the centerline of Missouri Avenue,

in the City of Los Angeles (see Plan for details). The street or portions of streets to be improved, and the district to be assessed to pay the costs and expenses of the improvement, shall be known for all proceedings hereunder as:

WESTHOLME AVE. & MISSOURI AVE. LIGHTING DISTRICT

Sec. 2. All of this work shall be done in accordance with the report of the Director of the Bureau of Street Lighting adopted by the Board of Public Works, approved by the City Council and on file in the office of the City Clerk. Reference to the report is hereby made for a full and detailed description of the proposed improvement and of the assessments to be levied.

Sec. 3. The Council hereby makes all the costs and expenses of the improvements, chargeable upon the district to be benefited, with no additional portion of the costs to be paid out of the City Treasury. District parcels shall be assessed pursuant to the Engineer's Report prepared and approved by the Bureau of Street Lighting.

Sec. 4. The Council hereby determines and declares that the district, which receives special benefit from the improvements, and is to be assessed to pay the costs and expenses of the improvements, is described by the diagram with City page number 15589 and accompanying assessment roll included by reference in the report of the Director of the Bureau of Street Lighting adopted by the Board of Public Works, which diagram indicates by a boundary line the extent of the territory included within the assessment district. Reference is hereby made to the report and diagram for a full and complete description of the district, which diagram shall govern for all details as to its extent.

Sec. 5. That the proceedings for the improvements shall be conducted in accordance with Sections 6.95 - 6.127 of the Los Angeles Administrative Code, Section 53753 of the California Government Code, and Proposition 218 (Articles XIII C and XIII D of the California Constitution).

Sec. 6. The Board of Public Works shall prepare and mail notices and ballots of the improvements to each property owner affected by the assessment, and have the notices to be published in newspapers of general circulation published and distributed in the several areas of the City in the manner and form and within the time required by law.

Sec. 7. The City Clerk shall conduct an assessment ballot proceeding for this lighting district, as required by Proposition 218 (Article XIII D of the California Constitution). The Clerk shall count, certify, and report the results to the Council. In tabulating the ballots, the ballots shall be weighted according to the proportional financial obligation of the affected property due to the improvement. If the count of the weighted "yes" votes is equal to or greater than the "no" votes, the Council shall impose the proposed assessment, contingent upon the construction of the specified lighting system. If the count of the weighted "no" votes are greater than the "yes" votes, the Council shall not impose the proposed assessment and the specified lighting system shall be removed from service or not constructed.

Sec. 8. The proposed street lighting maintenance assessments referenced here are intended to be in addition to or in replacement of the existing assessment, as specified in the Engineer's Report. Where the proposed assessment is to be in addition to the existing assessment, whether the proposed assessment is levied or abandoned, the existing assessment shall not be affected. Where the proposed assessment is to be in replacement of the existing assessment, if the proposed assessment is not levied, the existing assessment shall not be affected.

Sec. 9. For each year following the first year of the assessment, the amounts of the assessments designated in the assessment roll may be increased annually, without further notice or ballot, by no more than the annual Consumer Price Index (CPI) for the Los Angeles area, provided by the U.S. Dept. of Labor (Bureau of Labor Statistics). The annual Consumer Price Index (CPI) will be calculated from the calendar year (January 1- December 31) just prior to the assessment period affected (July 1-June 30).

Sec. 10. The administration of this district may be combined, without further notice or ballot, with the administration of any other district or districts, for which authority for the administrative combination is provided in the establishing ordinance. These combined districts, for all administrative purposes including but not limited to, assessment, diagram, revenue and expenditures, notice and balloting, may be treated as a single district.

Sec. 11. Notwithstanding that the assessments specified in the assessment roll are imposed for the 2021/22 fiscal year, only if the street lighting system is energized on or before July 1, 2021, shall those assessments be transferred to the 2021/22 property tax rolls and collected. If the system is not energized on or before that date, the assessments approved here, may be levied in the fiscal year following the year in which the system is energized, without further notice or ballot.

Sec. 12. The City Council shall hold a public hearing on _____ at 10:00 a.m. in the Council Chamber on the third floor of City Hall on the proposed improvement and assessment. Any person objecting to their assessment may file a written protest or appeal with the City Clerk at any time prior to the hearing by the City Council. Any person may also present written or oral comments at the City Council hearing on this matter. The protest must contain a description of the property in which each signer owns an interest, sufficient to identify the property, and be delivered to the City Clerk, and no other protests than those presented within the time specified will be considered.

Ballots are due to the City Clerk at any time prior to the close of the public hearing on the proposed improvement and assessment. The City Clerk shall prepare a report of the assessment ballot proceeding results to the City Council.

Sec. 13. The City Clerk shall certify to the passage of this ordinance and have it published in accordance with Council policy, either in a daily newspaper circulated in the City of Los Angeles or by posting for ten days in three public places in the City of Los Angeles: one copy on the bulletin board located at the Main Street entrance to the Los Angeles City Hall; one copy on the bulletin board located at the Main Street entrance to the Los Angeles City Hall East; and one copy on the bulletin board located at the Temple Street entrance to the Los Angeles County Hall of Records.

Approved as to Form and Legality

MICHAEL N. FEUER, City Attorney

By CROOK
CHRISTY NUMANO-HIURA
Deputy City Attorney

Date 7-10-21

File No. _____

Word File: L:\\$PROP218\Ordinance - Intention\OI - Westholme Ave & Missouri Ave (LD).docx

The Clerk of the City of Los Angeles hereby certifies that the foregoing ordinance was passed by the Council of the City of Los Angeles.

CITY CLERK

MAYOR

Ordinance Passed _____

Approved _____

ENGINEER'S REPORT

FOR THE

CITY OF LOS ANGELES
BUREAU OF STREET LIGHTING



REGARDING STREET LIGHTING MAINTENANCE ASSESSMENTS IN THE

WESTHOLME AVENUE & MISSOURI AVENUE
LIGHTING DISTRICT

IN CONFORMANCE WITH PROPOSITION 218

PREPARED July 7, 2021

Project ID No. 5310

Transmittal No. 2 to the Report of the Board of Public Works

**CITY OF LOS ANGELES
BUREAU OF STREET LIGHTING**

ENGINEER'S REPORT

Subject: Description of how the City finances the cost of street lighting operation and maintenance, how these assessments were calculated, and how this complies with Section 4 of Proposition 218, Article XIII D of the California Constitution, in regards to the subject street lighting maintenance assessment district(s).

Abstract: The Bureau of Street Lighting, for the Board of Public Works, administers and operates the street lighting system of the City. This includes managing the financing of the system. By Council Policy, about 80% of the streetlights are financed through street lighting maintenance assessments to benefiting properties, and the rest through the LADWP.

Proposition 218, section 4 (b), requires that "...All assessments shall be supported by a detailed engineer's report prepared by a registered professional engineer certified by the State of California..." It further requires in section 4 (f) that "...in any legal action contesting the validity of any assessment, the burden shall be on the agency to demonstrate that the property or properties in question receive a special benefit over and above the benefits conferred on the public at large and that the amount of any contested assessment is proportional to, and no greater than, the benefits conferred on the property or properties in question..."

The purpose of this report is to respond to the specific requirements of Proposition 218 and State law, for the subject street lighting maintenance assessment district(s) – Diagram with City page number 15589.

Prepared by:


Lang Dam, Prop. 218 Compliance Section SLEA II

Approved by:


Ruben Flamenco, P.E., Division Engineer, Street Lighting Assessment Division,
Bureau of Street Lighting

R.E. NO. E16069

Date 7/7/21



CONTENTS

<u>ITEM</u>	<u>PAGE</u>
Summary	3
Street Lighting Types and Financing	3
How Street Lighting Maintenance Assessments are Calculated	4
Equivalent Dwelling Unit Rates	5
Benefit Zones (assessment Rates)	7
Adjustment Factors	8
Specifications For The Operation of Street Lighting Maintenance Assessment District(s)	10
Data Entry Sheet(s)	11

Refer to the Report of the Board of Public Works For The Following Transmittals

1. Ordinance(s) of Intention for the Proposed Assessment District(s)
2. Assessment Diagram(s) for the Proposed Assessment District(s) – City page number 15589
3. Assessment Roll(s) for the Proposed Assessment District(s)

SUMMARY

This engineer's report will explain the methodology for the calculation of the street lighting operation and maintenance assessments, the City's policy between special and general benefit and information about the subject project.

STREET LIGHTING TYPES AND FINANCING

There are three types of street lighting in the City of Los Angeles, each with different purposes, physical characteristics and financing modes. The following is a brief description of each:

- A. SPECIAL BENEFIT** is the direct street lighting benefit to a property, and to its owner or users, based on the existence of the nearby street lighting systems that is designed to illuminate the roadway and sidewalk adjacent to the specific property at night. When there is a single streetlight in front of or near the property in question, there is special benefit to the extent that the roadway and sidewalk are illuminated, notwithstanding that the street lighting system for the block is incomplete. Proposition 218 allows the assessment of properties which receive special benefit, to the extent that the assessment is not greater than the reasonable cost of the proportional special benefit conferred on those parcels.

Special Benefit street light systems are permanent streetlight systems designed to meet City standards of illumination which provide special benefit to nearby properties. These are generally systems with steel or concrete poles, underground wiring, intended to be part of a complete system providing a designed level of illumination and uniformity on the roadway and sidewalk areas. These systems are generally installed through either, assessments to nearby benefiting properties, grants or through requirements on private developments, and are owned by the Department of Public Works. The financing of their entire costs of operation and maintenance is through the annual assessment of nearby properties that are determined to receive special benefit. All general benefits, if any, to the surrounding community and public in general from these special benefit streetlight systems are intangible and are not quantifiable.

B. GENERAL BENEFIT is defined as a benefit to properties in the surrounding community or a benefit to the public in general resulting from the improvements, activities or services to be provided by the assessment levy. These benefits include the benefit from street lighting systems for locations that do not benefit specific properties, as well as interim lighting for minimal traffic safety on wooden power poles and permanent lighting at intersections with mast arm or traffic vehicular heads. Any special benefit from these lights will be intangible and not quantifiable in relation to their General Benefit use. Proposition 218 requires the City to finance general benefit costs from other than property assessments. These costs are financed from public funds.

General Benefit lighting systems are permanent street light system and which illuminate vehicular and pedestrian bridges and tunnels; intersections with mast arm or traffic vehicular heads; and other locations where there are no adjacent or nearby properties which receive direct, special benefit. These are part of a complete system for the structure, or street, providing a designed level of illumination and uniformity on the roadway and sidewalk areas. The financing of their entire costs of operation and maintenance is through public funds and/or Department of Water and Power funds. These systems are generally installed with public funding, and owned by the Department of Public Works.

C. UTILITARIAN LIGHTING is a general benefit type of street lighting that is installed, operated and maintained by the Department of Water and Power. These lights are mounted on wooden power poles, and do not have a designed average level of uniformity or illumination. These lights are considered interim, minimal safety lighting for specific locations where there are no permanent street lighting systems. The costs of operation are financed through the Department of Water and Power. However, for "continuous utilitarian lighting" systems, or "continuous alley lighting", the lighting benefit associated with these systems exceeds standard lighting requirements, therefore these special systems are considered as systems with a special benefit component.

HOW MAINTENANCE ASSESSMENTS ARE CALCULATED

Based on Council Policy, Los Angeles Administrative Code, annual City Budgets, and assessment proceedings, assessments are for the total estimated amount of the cost of operation and maintenance.

All costs of street lighting maintenance and operation for the subject lighting systems deemed as special benefit are to be assessed - none are to be financed with public funds.

The total estimated amounts of revenues and operating costs for previously assessed parcels are shown in the annual reports for the Los Angeles City Street Lighting Maintenance Assessment District (LACLD). The assessment rates are based on these estimates, which rely on actual costs for previous years, and on historic relationships between the different rates.

Proper maintenance and operation of the streetlight infrastructure benefits all properties within the District by providing security, safety, and community character and vitality.

In addition, Proposition 218, the "Right to Vote on Taxes Act" which was approved on the November 1996 statewide ballot and added Article XIID to the California Constitution, requires that a parcel's assessment may not exceed the reasonable cost for the proportional special benefit conferred on that parcel. Article XIID provides that only special benefits are assessable and the City must separate the general benefits from the special benefits. It also requires that publicly owned properties, which benefit from the improvements, be assessed.

METHODOLOGY

The process of determining maintenance assessments for each parcel is based on evaluating three areas of calculation which are relative to the amount of special benefit received. These areas of calculation are: equivalent dwelling units (EDU), benefit zones (rates), and adjustment factors.

Assessment Calculation for a Parcel

$$\text{Assessment Cost} = (\text{Equivalent Dwelling Units}) \times (\text{Benefit Zone Rate}) \times (\text{Adjustment Factor})$$

Where, $\text{Adjustment Factor} = (\text{Benefit Factor}) \times (\text{Partial Lighting Factor}) \times (\text{Lot Shape Factor})$

The following section explains each area of calculation in more detail:

EQUIVALENT DWELLING UNITS

The calculation will take into account the different land uses on the properties for comparative purposes. (E.g. A vacant property vs. a multiple family property vs. a commercial property.)

The medium density single-family residential parcel has been selected as the basic unit for calculation of assessments; therefore, the medium density single-family residential parcel is defined as one (1) Equivalent Dwelling Unit (EDU). The calculation methodology developed relates all other land uses, and their respective lot sizes, to the medium density single-family residential land use. The determination of the EDU takes into account two factors in relation to a SFR: land use, and the lot size.

Land Use of the parcel The EDU is adjusted in accordance with the land use of the property. The factor assigned is related to the approximate use or trips generated for a particular property type. For example, multiple family residences, with many dwelling units, will have more use of the property and of a street lighting system, compared to SFR. Similarly, vacant properties and agricultural properties of similar size, will have less use and benefit, compared to SFR. The land use adjustment determines the proportional special benefit that the parcel derives from the use of the street lighting system within the vicinity.

Size of the parcel One of the factors in determining the EDU of all properties is evaluating the size of a parcel compared to the average lot size of a medium density SFR. Based on an analysis of all of the properties within the City of Los Angeles, it has been determined that the average medium SFR lot size is approximately 7,000 to 8,000 sq. ft. From this same data, the EDU conversion factor is adjusted proportionally with respect to various land use distributions across eight lot size categories. They are: less than 0.1 acres, 0.1 to 0.2 acres, 0.2 to 0.4 acres, 0.4 to 0.8 acres, 0.8 to 1.5 acres, 1.5 to 3.0 acres, 3.0 to 6.0 acres, and greater than 6.0 acres.

Table 1, on the following page, summarizes the EDU conversion factors for various land uses and their respective lot sizes.

TABLE 1 - EQUIVALENT DWELLING UNIT (EDU)

LAND USE			ACREAGE							
			< 0.1	0.1-0.2	0.2-0.4	0.4-0.8	0.8-1.5	1.5-3.0	3.0-6.0	> 6.0
RESIDENTIAL	SINGLE FAMILY		0.75	1	1.25	1.5	1.75	2	2.25	2.5
	MULTI-FAMILY <small>APARTMENTS, CONDOS, PRIVATE COMMUNITIES</small>	2 – 4 units	1.5	1.75	3.25	5.5	8	11	14	18
		5 - 15 units	1.75	2	3.75	6.25	9	13	15	21
		16 - 25 units	2	2.5	4.5	7	10	15	17	25
		26 - 50 units	2.5	3	5	8	11.5	17	19	30
		> 50 units	3	4	6	9.5	13	19	25	40
NON-RESIDENTIAL	COMMERCIAL INSTITUTION GOVERNMENT		0.75	1.25	2	4	6	11.5	20	40
	INDUSTRIAL UTILITY		0.5	1	1.25	2.25	4	7	10	25
	MOBILE HOME PARKS		0.35	0.75	1	1.75	3	4.25	7.5	15
	VACANT AGRICULTURE		0.25	0.5	0.75	1.25	1.75	3.5	4.5	8

RESIDENTIAL

Residential properties include single family residential parcels and multiple family residential parcels.

- Single Family Residential (SFR) Parcels: All SFR parcels with lot sizes equal to 0.1 acre, and up to 0.2 acre, are considered medium density SFR, and are assigned the value of 1 equivalent dwelling unit (EDU).
- Multi-Family Residential (MFR) Parcels: The equivalencies of multi-residential land uses, such as apartments, condominiums, and private communities, are calculated based on their respective population densities (dwelling units to lot size), and their residential land uses as they relate to the medium-density SFR. These factors are derived from trip generation rates and estimated wastewater usage, which are both related to population density and usage.

NON-RESIDENTIAL

Non-residential properties include commercial, government, institutional (such as schools, churches and hospitals), industrial, utility, mobile homes, parks, vacant lots, and agricultural.

- Vacant and agricultural properties consist of parcels with few or no improved structures. Utilization of vacant property is significantly less than improved property, therefore receive substantially less lighting benefit.

BENEFIT ZONES (RATES)

Benefit Zones are used to differentiate between the different types of lighting services each parcel receives. These zones indicate the type of lighting system used (i.e. ornamental, modern, pedestrian, etc.), as well as the location where the lighting system will be installed (i.e. arterial, residential, etc.)

Each benefit zone will have a specific assessment rate associated with it. The rates associated with these zones have been set in accordance to the Bureau's current maintenance district. These rates include costs for energy, maintenance, administration and eventual replacement.

The assessment each parcel receives will be relative to the proportioned benefit received from each benefit zone. Parcel receiving benefit from multiple lighting systems, may be included in multiple benefit zones relative to the proportioned benefit.

Zones may be adjusted due to any identified general benefit component. For parcels on corners with more than one lit side, the parcel will be zoned per the side that the property takes access. We have determined that there are seven (7) different levels of benefit within the District, and these are distinguished by different zone designations. The zones identified below are assumed to utilize energy efficient lamps. Any request for lamps that are not energy efficient or require additional maintenance will need to be evaluated and the rate will need to be adjusted accordingly.

TABLE 2 – BENEFIT ZONE SUMMARY

BENEFIT ZONE	DESCRIPTION	RATE
Zone 1	This zone is an ornamental lighting system on residential streets. This lighting system generally is used to illuminate the roadway and sidewalk areas.	\$114.94
Zone 2	This zone is a modern lighting system on residential streets.	\$85.21
Zone 3	This zone is a modern lighting system on arterial streets.	\$189.96
Zone 4	This zone is applied to lighting systems that require additional maintenance or energy greater than standard energy efficient lamps.	\$30.07
Zone 5	This zone is for special stand alone pedestrian electroliers on arterial streets. The lighting system provides illumination for pedestrian use only. This zone would be in addition to zone's 1, 2, 3 or 4.	\$124.92
Zone 6	This zone is for special pedestrian systems that are attached to existing roadway electroliers. This zone would be in addition to zone's 1, 2, 3 or 4.	\$75.34
Zone 7	This zone is for continuous utilitarian alley lighting. This type of lighting consists of simple 100W HPS luminaires mounted to existing wooden power poles. Standard util lighting (general benefit) is spaced no closer than 300 feet to another existing street lighting source. Continuous utilitarian alley lighting (special benefit) exceeds this standard, and may be spaced at closer intervals.	\$35.02

The following table provides more detail regarding the maximum assessment rates for each of the Zones:

TABLE 3 – ASSESSMENT RATE DETAILS

ZONE	Admin & Eng	Energy (ECA, Utility Users Tax)	Replace	Repair	Tree Trim	Total BU	Total FY 2004-05 Max \$/BU *	Total FY 2021-22**
1	\$541,745	\$ 1,175,461.83	\$450,130	\$548,859	\$120,264	34,343.44	\$82.59	\$114.94
2	\$6,008,929	\$10,636,819.25	\$4,992,757	\$6,087,840	\$1,333,943	474,857.79	\$61.20	\$85.21
3	\$2,252,888	\$ 4,622,360.97	\$1,871,902	\$2,282,474	\$500,126	84,486.29	\$136.47	\$189.96
4	\$5,967	\$ 315,887.76	\$0	\$6,045	\$0	15,182.44	\$21.60	\$30.07
5	\$205,715	\$ 536,528.47	\$170,926	\$208,416	\$45,667	13,273.31	\$89.78	\$124.92
6	\$762	\$ 297,504.72	\$14,284	\$772	\$0	6,336.65	\$54.14	\$75.34
TOTAL	\$9,016,006	\$17,584,563	\$7,500,000	\$9,134,407	\$2,000,000	N/A	\$45,234,970	N/A

* The amounts of the assessments designated in the assessment roll may be increased annually, without further notice or ballot, by no more than the annual Consumer Price Index (CPI) for the Los Angeles area, as provided by the U.S. Dept. of Labor (Bureau of Labor Statistics). The annual Consumer Price Index (CPI) will be calculated from the calendar year (January 1- December 31) just prior to the assessment period affected (July 1- June 30).

Assessment Rate adjusted by **1.62% in March 2021 for the annual Consumer Price Index (CPI) for the 2020 calendar year (January 1 - December 31).

Note: Duplexes are charged 130% of the normal rate. Triplexes are charged 140% of the normal rate. Four-plexes are charged 150% of the normal rate. SFR parcels on arterial streets (zone 3) are charged 75% of the normal rate.

ADJUSTMENT FACTORS

These include benefit factors, partial lighting factors, and lot shape factors. Benefit Factors will define the benefit associated with the use of the property. Partial lighting factors will define the proportion of lighting benefit received by the affected properties. Lot shape factors will provide adjustments for odd shaped lots where the available benefiting frontage is disproportionate to the relative amount of lighting benefit received (e.g. flag-lots, corner lots, etc.).

Benefit Factors - The EDU rates are modified by Benefit Factors that relate to how a particular land use benefits from streetlights. The amount of benefit received will vary with the different land use on the property. There are two categories from which the benefit of a parcel is derived:

1. **Security and Safety Benefit.** The prevention of crime and the alleviation of the fear of crime at the assessed properties, and the prevention of local pedestrian and traffic accidents related to the assessed properties.
2. **Community Character and Vitality Benefit.** The promotion of social interaction, promotion of business and industry, and the contribution to a positive night time visual image for the assessed properties.

To assign the benefit factors, each land use is compared to residential properties. Residential properties are the base properties and are assigned benefit factors of 1 for both the "Security and Safety Benefit" and the "Community Character and Vitality Benefit". Commercial and Parks benefit similarly to residential property and therefore are assigned the same benefit factors. Industrial and utility properties receive benefits from added security and safety, but receive little to no benefit for community character and vitality, as the nature of these properties do not promote either. Likewise, vacant and agriculture properties receive benefits from added security and safety, although not at nearly the level of a developed property, but receive little benefit from additional community character and vitality.

Table 4 on the following page provides a summary of the Benefit Factors that are applied.

Table 4 – STREET LIGHTING BENEFIT FACTORS

Land Use	Residential (non-arterial)	Residential (arterial)	Commercial	Institutional (schools)	Utility, Industrial	Park	Vacant, Agriculture
Security and Safety	1	1	1	1	1	1	0.5
Community Character and Vitality	1	0.5	1	0.5	0	1	0.5
Subtotal:	2	1.5	2	1.5	1	2	1
Applied Benefit Factor	1	0.75	1	0.75	0.5	1	0.5

Partial Lighting Factors - The EDU rates are further modified by Partial Lighting Factors that take into consideration the amount of benefiting frontage lit by the streetlights. If almost the entire frontage of a parcel is lit, then the Partial Lighting Factor is 1.0. If the frontage of a parcel is not fully lit, then a Partial Lighting Factor of 0.75, 0.50 or 0.25 will be applied depending on the percentage of frontage lit.

Lot Shape Factors - Lot shape factors will provide adjustments for odd shaped lots where the available benefiting frontage is disproportionate to the relative amount of lighting benefit received. For lots where the amount of lighting benefit received exceeds normal design standards, the assessment will be increased 10%. An example of this case would be corner lots with two or more benefiting sides, compared to similar shaped mid-block lots with only one benefiting side (normal configuration). For lots where the amount of lighting benefit received is less than comparable lots of similar size and land use, such as flag-lots, compound flag lots, or complex lots, they will receive assessment discounts of 25%, 50%, and 75%, respectively.

The actual assessments levied in any fiscal year will be as approved by the City Council and may not exceed the maximum assessment rate without receiving property owner approval for increase. The actual annual assessment rates for each Zone will be calculated each year based on the estimated costs of operating and maintaining the street lighting system in the following fiscal year. **The funding source to repair and maintain the City of Los Angeles' general benefit lights are not included in the estimated annual budget.**

For parcels with mixed use, such as a commercial / residential combination, the benefit units are calculated for each use separately, and the higher of the two calculations will be used.

It is our conclusion that the proposed street lighting maintenance assessments follow the methodology described above.

SPECIFICATIONS FOR THE OPERATION OF STREET LIGHTING MAINTENANCE DISTRICTS IN THE CITY OF LOS ANGELES FOR 2021-22

WORK TO BE DONE. The work and improvement to be done shall be the operation, including furnishing electric energy and timing/switching; maintenance, including lamp changing, emergency services, pole painting, fixture cleaning and glassware replacement, and rehabilitation, which includes modernization and replacement of systems; repairs, including poles, conduit, wiring and fusing, and fixtures repair and replacement; management of the funds, records, engineering, equipment approval and testing, administration and assessments, buildings, vehicles, equipment and materials; and related activities for the street lighting system designated herein under the "MAINTENANCE ASSESSMENT DISTRICT," – Diagram with City page number 15589, for the fiscal year ending June 30, 2022, in accordance with the report of the Board of Public Works therefore, on file in the office of the City Clerk.

AUTHORITY. The said work and improvement is to be made under and is to be governed in all particulars by the Charter of the City of Los Angeles, Section 580 and other sections; the Los Angeles Administrative Code, Section 6.95-6.127; Proposition 218 (Articles XIII C and XIII D of the California Constitution), and the Ordinance of Intention to be hereafter adopted therefore.

LIGHTING SYSTEM. The street lighting system consists of electroliers, luminaires, and lamps, together with the necessary conduits, cables, wires and other appurtenances. Plans showing the location and description of said equipment are on file in the office of the Bureau of Street Lighting and are hereby referred to and made a part of these specifications. The properties to be benefited by the work and improvement are designated in the assessment diagrams on file in the office of the Bureau of Street Lighting, Assessment Engineering Division, and are hereby referred to and made a part of the specifications.

OPERATION SCHEDULES. The lighting system shall be lighted in accordance with the All Night and 1:00 a.m. schedules of operation, and minor exceptions, as agreed upon by the Department of Public Works and the Department of Water and Power, or other utility suppliers.

ELECTRIC ENERGY. It is contemplated that the City of Los Angeles, through its Department of Public Works, will purchase electric energy as it may deem necessary from the Department of Water and Power, or other utility suppliers, in accordance with the terms, conditions, and rates prescribed for in such services as have been agreed upon by the Board of Public Works and the utility supplier, and approved by the City Council.

MAINTENANCE. The Department of Public Works will itself perform the work, or will contract for certain work with the Department of Water and Power, or private companies, in providing normal maintenance for the following district(s), in accordance with the terms, and conditions as prescribed for in such services as have been agreed upon by the Board of Public Works and the supplier, and approved by the City Council.

MAINTENANCE ASSESSMENT DISTRICT TITLE

WESTHOLME AVENUE & MISSOURI AVENUE Lighting District

REPAIRS. The Department of Public Works, will itself perform the repair work, or will contract for certain work with private companies, provide the materials, equipment and expense, appliances, and other appurtenances and appurtenant work necessary to repair the street lighting system. This may also require approval by the City Council.

WESTHOLME AVE. & MISSOURI AVE.

City Assmt ID	APN	Situs	Owner name	Owner address	Land Use	Acreage	Dwelling Units	Ben zone	Partial Ltg	Lot Shape	Assmt	Pct Total	Existing Assmt	NOTE
15589-001	4317-004-013	1819 WESTHOLME AVE LOS ANGELES CA 90025	GOING WEST LLC	2701 190TH ST STE 201 REDONDO BEACH, CA 90278	MFR	0.17	6	2	1.00	1.00	\$170.42	16.67%	\$77.56	A
15589-002	4317-004-079	1825 WESTHOLME AVE 5 LOS ANGELES 90025	ROTHMAN, JASON L	1825 WESTHOLME AVE UNIT 5 LOS ANGELES, CA 90025	CDO	0.18	1	2	1.00	1.00	\$34.08	3.33%	\$79.11	A
15589-002	4317-004-080	1825 WESTHOLME AVE 4 LOS ANGELES 90025	ZHANG, YUYAN	1825 WESTHOLME AVE UNIT 4 LOS ANGELES, CA 90025	CDO	0.18	1	2	1.00	1.00	\$34.08	3.33%	\$0.00	
15589-002	4317-004-081	1825 WESTHOLME AVE NO 3 LOS ANGELES CA 90025	DESIREE NEMAN TRUST	1825 WESTHOLME AVE 3 LOS ANGELES, CA 90025	CDO	0.18	1	2	1.00	1.00	\$34.08	3.33%	\$0.00	
15589-002	4317-004-082	1825 WESTHOLME AVE 2 LOS ANGELES 90025	IRENE CHENG TRUST AND CHENG, JACK C/O EVELYN YEH	2432 NALIN DR LOS ANGELES, CA 90077	CDO	0.18	1	2	1.00	1.00	\$34.08	3.33%	\$0.00	
15589-002	4317-004-083	1825 WESTHOLME AVE 1 LOS ANGELES 90025	MARTIN SCHIENLE TRUST	11615 NEBRASKA AVE # 1 LOS ANGELES, CA 90025	CDO	0.18	1	2	1.00	1.00	\$34.08	3.33%	\$0.00	
15589-003	4317-004-047	1830 WESTHOLME AVE NO 101 LOS ANGELES CA 90025	ANDREW GLASSMAN TRUST AND HAYES, JACEY L	17967 BORIS DR ENCINO, CA 91316	CDO	0.64	1	2	0.50	1.00	\$11.36	1.11%	\$310.24	A
15589-003	4317-004-048	1830 WESTHOLME AVE NO 102 LOS ANGELES CA 90025	SHERVIN KHODADADI TRUST	1830 WESTHOLME AVE UNIT 102 LOS ANGELES, CA 90025	CDO	0.64	1	2	0.50	1.00	\$11.36	1.11%	\$0.00	
15589-003	4317-004-049	1830 WESTHOLME AVE NO 103 LOS ANGELES CA 90025	KULKARNI, RADHA D	1830 WESTHOLME AVE UNIT 103 LOS ANGELES, CA 90025	CDO	0.64	1	2	0.50	1.00	\$11.36	1.11%	\$0.00	
15589-003	4317-004-050	1830 WESTHOLME AVE NO 104 LOS ANGELES CA 90025	SITZES, DOUGLAS AND ELIZABETH TRS	1830 WESTHOLME AVE UNIT 104 LOS ANGELES, CA 90025	CDO	0.64	1	2	0.50	1.00	\$11.36	1.11%	\$0.00	
15589-003	4317-004-051	1830 WESTHOLME AVE APT 0105 LOS ANGELES CA 90025	WAX, SELMA R TR	1830 WESTHOLME AVE NO 105 LOS ANGELES, CA 90025	CDO	0.64	1	2	0.50	1.00	\$11.36	1.11%	\$0.00	
15589-003	4317-004-052	1830 WESTHOLME AVE NO 106 LOS ANGELES CA 90025	OZZEI PROPERTIES LLC C/O OZKAN DERBEND	1830 WESTHOLME AVE UNIT 106 LOS ANGELES, CA 90025	CDO	0.64	1	2	0.50	1.00	\$11.36	1.11%	\$0.00	
15589-003	4317-004-053	1830 WESTHOLME AVE NO 107 LOS ANGELES CA 90025	HADSELL, D AVID AND DAWN M	1830 WESTHOLME AVE #107 LOS ANGELES, CA 90025	CDO	0.64	1	2	0.50	1.00	\$11.36	1.11%	\$0.00	
15589-003	4317-004-054	1830 WESTHOLME AVE NO 108 LOS ANGELES CA 90025	ESKIN, BONNIE	1830 WESTHOLME AVE UNIT 108 LOS ANGELES, CA 90025	CDO	0.64	1	2	0.50	1.00	\$11.36	1.11%	\$0.00	
15589-003	4317-004-055	1830 WESTHOLME AVE NO 109 LOS ANGELES CA 90025	BLACK GRAHAM TRUST BLACK, ROBIN L AND BLACK, TODD	10559 LE CONTE AVE LOS ANGELES, CA 90024	CDO	0.64	1	2	0.50	1.00	\$11.36	1.11%	\$0.00	
15589-003	4317-004-056	1830 WESTHOLME AVE NO 110 LOS ANGELES CA 90025	EHSANIPOUR, HAMID AND JANET	1830 WESTHOLME AVE APT 110 LOS ANGELES, CA 90025	CDO	0.64	1	2	0.50	1.00	\$11.36	1.11%	\$0.00	
15589-003	4317-004-057	1830 WESTHOLME AVE NO 201 LOS ANGELES CA 90025	SADIGHPOUR, MASOUD AND SOFIA TRS	1830 WESTHOLME AVE UNIT 201 LOS ANGELES, CA 90025	CDO	0.64	1	2	0.50	1.00	\$11.36	1.11%	\$0.00	
15589-003	4317-004-058	1830 WESTHOLME AVE NO 202 LOS ANGELES CA 90025	SHERYL SHEVAN TRUST	1830 WESTHOLME AVE STE 202 LOS ANGELES, CA 90025	CDO	0.64	1	2	0.50	1.00	\$11.36	1.11%	\$0.00	
15589-003	4317-004-059	1830 WESTHOLME AVE NO 203 LOS ANGELES CA 90025	KLEIN, JARED M AND ROKHSAR, NANCY	1830 WESTHOLME AVE UNIT 203 LOS ANGELES, CA 90025	CDO	0.64	1	2	0.50	1.00	\$11.36	1.11%	\$0.00	
15589-003	4317-004-060	1830 WESTHOLME AVE NO 204 LOS ANGELES CA 90025	KRUSKA, LARA	1830 WESTHOLME AVE UNIT 204 LOS ANGELES, CA 90025	CDO	0.64	1	2	0.50	1.00	\$11.36	1.11%	\$0.00	
15589-003	4317-004-061	1830 WESTHOLME AVE NO 205 LOS ANGELES CA 90025	GARDELLA, DENISE TR	1830 WESTHOLME AVE UNIT 205 LOS ANGELES, CA 90025	CDO	0.64	1	2	0.50	1.00	\$11.36	1.11%	\$0.00	
15589-003	4317-004-062	1830 WESTHOLME AVE NO 206 LOS ANGELES CA 90025	VALAVALA, SASHIDHAR V AND CHILAKAMARRI, NEELIMA	5067 CUMBERLAND DR CYPRESS, CA 90630	CDO	0.64	1	2	0.50	1.00	\$11.36	1.11%	\$0.00	

WESTHOLME AVE. & MISSOURI AVE.

City Assmt ID	APN	Situs	Owner name	Owner address	Land Use	Acres	Dwelling Units	Ben zone	Partial Ltg	Lot Shape	Assmt	Pct Total	Existing Assmt	NOTE
15589-003	4317-004-063	1830 WESTHOLME AVE NO 207 LOS ANGELES CA 90025	VERGHESE, KARINYA	1830 WESTHOLME AVE UNIT 207 LOS ANGELES, CA 90025	CDO	0.64	1	2	0.50	1.00	\$11.36	1.11%	\$0.00	
15589-003	4317-004-064	1830 WESTHOLME AVE NO 208 LOS ANGELES CA 90025	FRANKENHEIMER, JOHN TR C/O LOEB AND LOEB	10100 SANTA MONICA BLVD # 2200 LOS ANGELES, CA 90067	CDO	0.64	1	2	0.50	1.00	\$11.36	1.11%	\$0.00	
15589-003	4317-004-065	1830 WESTHOLME AVE NO 209 LOS ANGELES CA 90025	FONG YING TSAI TRUST	2013 FAIRBURN AVE LOS ANGELES, CA 90025	CDO	0.64	1	2	0.50	1.00	\$11.36	1.11%	\$0.00	
15589-003	4317-004-066	1830 WESTHOLME AVE NO 210 LOS ANGELES CA 90025	SASSANEH H POOSTI TRUST	1830 WESTHOLME AVE UNIT 210 LOS ANGELES, CA 90025	CDO	0.64	1	2	0.50	1.00	\$11.36	1.11%	\$0.00	
15589-003	4317-004-067	1830 WESTHOLME AVE NO 301 LOS ANGELES CA 90025	BEHMANESH, NILOFAR AND KHOSHLESAN, IGAL	1830 WESTHOLME AVE UNIT 301 LOS ANGELES, CA 90025	CDO	0.64	1	2	0.50	1.00	\$11.36	1.11%	\$0.00	
15589-003	4317-004-068	1830 WESTHOLME AVE NO 302 LOS ANGELES CA 90025	STURM, SHERIDAN G TR	1830 WESTHOLME AVE UNIT 302 LOS ANGELES, CA 90025	CDO	0.64	1	2	0.50	1.00	\$11.36	1.11%	\$0.00	
15589-003	4317-004-069	1830 WESTHOLME AVE NO 303 LOS ANGELES CA 90025	HU, JACK AND WU, PAGGY	1830 WESTHOLME AVE NO 303 LOS ANGELES, CA 90025	CDO	0.64	1	2	0.50	1.00	\$11.36	1.11%	\$0.00	
15589-003	4317-004-070	1830 WESTHOLME AVE NO 304 LOS ANGELES CA 90025	EILEEN BACH Y RITA TRUST	1830 WESTHOLME AVE APT 304 LOS ANGELES, CA 90025	CDO	0.64	1	2	0.50	1.00	\$11.36	1.11%	\$0.00	
15589-003	4317-004-071	1830 WESTHOLME AVE NO 305 LOS ANGELES CA 90025	SHAH, SAHIL R AND ALISA	1830 WESTHOLME AVE UNIT 305 LOS ANGELES, CA 90025	CDO	0.64	1	2	0.50	1.00	\$11.36	1.11%	\$0.00	
15589-003	4317-004-072	1830 WESTHOLME AVE APT 0306 LOS ANGELES CA 90025	MARYANNE C DAETWILER TRUST	1830 WESTHOLME AVE UNIT 306 LOS ANGELES, CA 90025	CDO	0.64	1	2	0.50	1.00	\$11.36	1.11%	\$0.00	
15589-003	4317-004-073	1830 WESTHOLME AVE NO 307 LOS ANGELES CA 90025	SAVAR, AARON	1830 WESTHOLME AVE UNIT 307 LOS ANGELES, CA 90025	CDO	0.64	1	2	0.50	1.00	\$11.36	1.11%	\$0.00	
15589-003	4317-004-074	1830 WESTHOLME AVE NO 308 LOS ANGELES CA 90025	DAVOODI AND MORISI TRUST	1830 WESTHOLME AVE UNIT 308 LOS ANGELES, CA 90025	CDO	0.64	1	2	0.50	1.00	\$11.36	1.11%	\$0.00	
15589-003	4317-004-075	1830 WESTHOLME AVE NO 309 LOS ANGELES CA 90025	KOJEN, EPHRAIM AND ZINA AND KOJEN, NATALIE	1830 WESTHOLME AVE APT 309 LOS ANGELES, CA 90025	CDO	0.64	1	2	0.50	1.00	\$11.36	1.11%	\$0.00	
15589-003	4317-004-076	1830 WESTHOLME AVE NO 310 LOS ANGELES CA 90025	BOGOTCH, FRANCINE TR	1830 WESTHOLME AVE UNIT 310 LOS ANGELES, CA 90025	CDO	0.64	1	2	0.50	1.00	\$11.36	1.11%	\$0.00	
15589-004	4317-004-021	1812 WESTHOLME AVE LOS ANGELES CA 90025	PADUA, WILLIAM AND CHEN TRS	2790 DEVONPORT RD SAN MARINO, CA 91108	MFR	0.17	12	2	1.00	1.00	\$170.42	16.67%	\$74.46	A
15589-005	4317-004-084	1815 WESTHOLME AVE LOS ANGELES CA 90025	PASKUS, RENEE B TR	33 MONTECILLO DR ROLLING HILLS ESTATES, CA 90274	CDO	0.15	1	2	1.00	1.00	\$28.40	2.78%	\$68.25	A
15589-005	4317-004-085	1815 WESTHOLME AVE LOS ANGELES CA 90025	LOW, MICHAEL J	1815 WESTHOLME AVE UNIT 2 LOS ANGELES, CA 90025	CDO	0.15	1	2	1.00	1.00	\$28.40	2.78%	\$0.00	
15589-005	4317-004-086	1815 WESTHOLME AVE LOS ANGELES CA 90025	RISCH FAMILY TRUST RISCH, ALAN AND REUVEN	1102 MAPLE ST SANTA MONICA, CA 90405	CDO	0.15	1	2	1.00	1.00	\$28.40	2.78%	\$0.00	
15589-005	4317-004-087	1815 WESTHOLME AVE LOS ANGELES CA 90025	VOSICHER, DAVID	1815 WESTHOLME AVE LOS ANGELES, CA 90025	CDO	0.15	1	2	1.00	1.00	\$28.40	2.78%	\$0.00	
15589-005	4317-004-088	1815 WESTHOLME AVE LOS ANGELES CA 90025	SACKS, MALLORY K AND SANDS, TIMOTHY J	1815 WESTHOLME AVE UNIT 5 LOS ANGELES, CA 90025	CDO	0.15	1	2	1.00	1.00	\$28.40	2.78%	\$0.00	
15589-005	4317-004-089	1815 WESTHOLME AVE UNIT 6 LOS ANGELES CA 90025	AIHARA, DEAN AND HISAE	1815 WESTHOLME AVE NO 6 LOS ANGELES, CA 90025	CDO	0.15	1	2	1.00	1.00	\$28.40	2.78%	\$0.00	

TOTAL VOTING PARCELS: 43

Total: \$1,022.44 100%

A = New assessments will replace existing assessments

CITY OF LOS ANGELES
LIGHTING MAINTENANCE ASSESSMENT ROLL

(Under Secs. 6.95-6.127 of the Los Angeles Administrative Code)

For the Maintenance and the Furnishing of Electric Energy for the Lighting of

WESTHOLME AVE. & MISSOURI AVE.

LIGHTING DISTRICT

as shown on the assessment diagram recorded in the Bureau of Street Lighting in Assessment Map Book 25

Page 0589, for the Fiscal Year of 2021-2022, in accordance with:

Ordinance of Intention No. _____

ESTIMATE COST

Electric Energy	_____
Maintenance	_____
Incidentals	_____
	Total _____
Less Unexpended Balance	_____
	Balance _____
AMOUNT ASSESSED TO PROPERTY OWNERS _____	

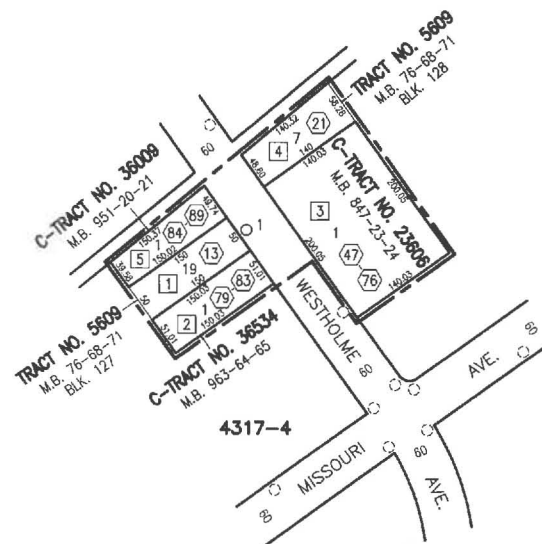
Dollars	Cents
\$443	00
\$411	00
\$169	00
\$1,022	00
\$0	00
\$1,022	00
\$1,022	00

PROPOSED LIGHTING MAINTENANCE ASSESSMENT ROLL DESIGN

[illegible]

That certain parcel of land numbered in red ink on assessment diagram or assessment as filed in Book No.	Book	25	at page	0589	as " 003 "	CDO	0.64	2	\$11.36	4317-004-070
That certain parcel of land numbered in red ink on assessment diagram or assessment as filed in Book No.	Book	25	at page	0589	as " 003 "	CDO	0.64	2	\$11.36	4317-004-071
That certain parcel of land numbered in red ink on assessment diagram or assessment as filed in Book No.	Book	25	at page	0589	as " 003 "	CDO	0.64	2	\$11.36	4317-004-072
That certain parcel of land numbered in red ink on assessment diagram or assessment as filed in Book No.	Book	25	at page	0589	as " 003 "	CDO	0.64	2	\$11.36	4317-004-073
That certain parcel of land numbered in red ink on assessment diagram or assessment as filed in Book No.	Book	25	at page	0589	as " 003 "	CDO	0.64	2	\$11.36	4317-004-074
That certain parcel of land numbered in red ink on assessment diagram or assessment as filed in Book No.	Book	25	at page	0589	as " 003 "	CDO	0.64	2	\$11.36	4317-004-075
That certain parcel of land numbered in red ink on assessment diagram or assessment as filed in Book No.	Book	25	at page	0589	as " 003 "	CDO	0.64	2	\$11.36	4317-004-076
That certain parcel of land numbered in red ink on assessment diagram or assessment as filed in Book No.	Book	25	at page	0589	as " 004 "	MFR	0.17	2	\$170.42	4317-004-021
That certain parcel of land numbered in red ink on assessment diagram or assessment as filed in Book No.	Book	25	at page	0589	as " 005 "	CDO	0.15	2	\$28.40	4317-004-084
That certain parcel of land numbered in red ink on assessment diagram or assessment as filed in Book No.	Book	25	at page	0589	as " 005 "	CDO	0.15	2	\$28.40	4317-004-085
That certain parcel of land numbered in red ink on assessment diagram or assessment as filed in Book No.	Book	25	at page	0589	as " 005 "	CDO	0.15	2	\$28.40	4317-004-086
That certain parcel of land numbered in red ink on assessment diagram or assessment as filed in Book No.	Book	25	at page	0589	as " 005 "	CDO	0.15	2	\$28.40	4317-004-087
That certain parcel of land numbered in red ink on assessment diagram or assessment as filed in Book No.	Book	25	at page	0589	as " 005 "	CDO	0.15	2	\$28.40	4317-004-088
That certain parcel of land numbered in red ink on assessment diagram or assessment as filed in Book No.	Book	25	at page	0589	as " 005 "	CDO	0.15	2	\$28.40	4317-004-089
						** DISTRICT ** ASSESSMENT =				\$1,022.44

SCALE
1"=100'



DATE	PARCEL NO.	DIST.	PREVIOUS PAGE	REFERENCE PARCEL
------	------------	-------	---------------	------------------

[illegible]

COUNCIL DISTRICT NO. 5
PROJECT ID NO. 5310

4317	4
C.M.B.	Page(s)

DISTRICT OUTLINED BY [Signature]
DISTRICT CHECKED BY Ruben Flamenco
APPROVED November 3, 2021

By Ruben J. Lamoreaux For
Engineer

In Serv.	Date	by	D.M.	129B157
Drawn	05-18-21	B.B.	W.D.	Plan
Checked	10-27-21	L.D.	BR403052	
Thomas Guide Page	632	Grid	C4	

414	Thomas Guide Page	632	Grid	C4
-----	-------------------	-----	------	----

KERNEY H. MARINE, JR., ASSISTANT DIRECTOR -- BUREAU OF STREET LIGHTING
THE EXTERIOR BOUNDARIES OF THE ASSESSMENT DISTRICT ARE SHOWN

- ① Indicates L.A. County APN
 ② Indicates L.A. City Assessment Number
 ③ Indicates New Electroliner.....B.Z.
 ④ Indicates New Electroliner.....B.Z.
 ⑤ Indicates New Electroliner.....B.Z.
 ⑥ Indicates New Electroliner.....B.Z.
 ⑦ Indicates Future Electroliner.....B.Z.
 ⑧ Indicates Adjacent System

WESTHOLME AVE. & MISSOURI AVE. L.D.

Page 15589